



PRECISION RAIL OF OREGON PRODUCT GUIDE



precisionrail.com

 **LUMARAIL**TM
ARCHITECTURAL PRODUCTS

Key Information

Infill Options:

5/8" Square Pickets

1/4" Tempered Glass

Horizontally Run Cable

Posts are 2 3/8"x 2 3/8"

Baseplates are 5"x 5", 3/8" Thickness

- Place corner posts, then evenly spread the remaining posts between.
- Can attach to existing posts and structures.
- TR375 is used to meet stair code for handrails.
- Install or self-install options.
- Custom colors and lighting options available.
- Aluminum will never rust and is 1/3 the weight of steel!

- Delivery - Available within 50 miles of SE Portland; \$75 Fee
- Returns - Long parts must be over 10 ft; small parts must be undamaged and in original packaging. Tools can be returned for a 75% refund

TR200 - Cable



TR200 - Cable



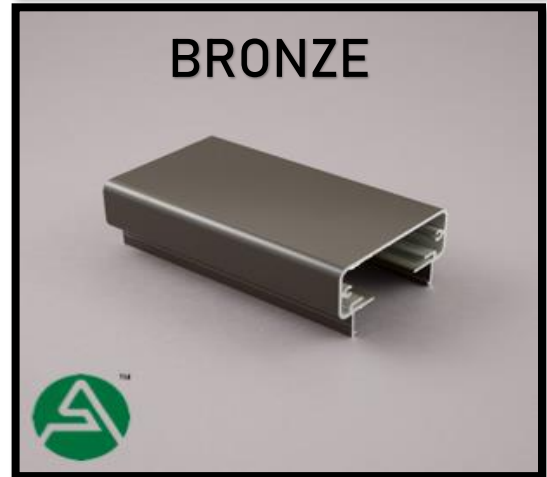
- 3 1/2" Wide Top Rail
- Installs Over Posts
- 1/8" Stainless Steel Cable
- Modern Design
- Maximum 4' Between Posts Unless a Mid-Span Picket Is Used Which Increases The Distance To 6'



TR200 - Glass



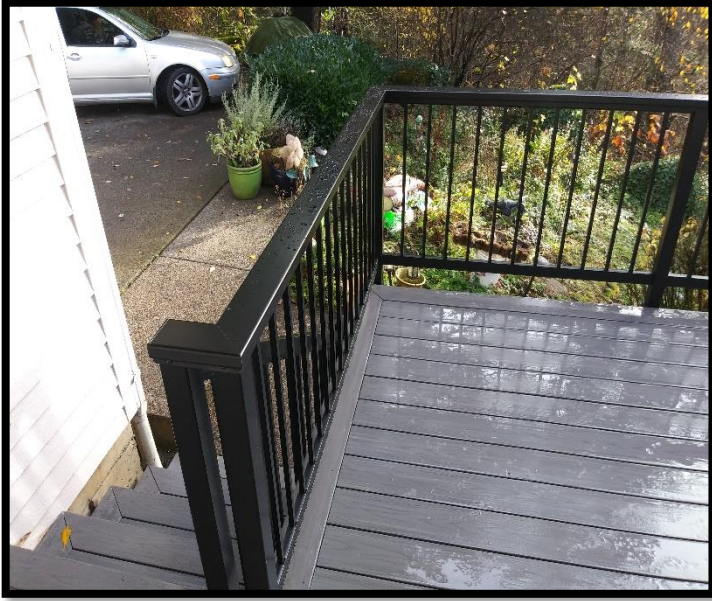
TR200 - Glass



- 3 1/2" Wide Top Rail
- Installs Over Posts
- 1/4" Tempered Glass
- Unobstructed View, Excellent Wind Break
- Maximum 5' Between Posts

precisionrail.com

TR200 - Picket



precisionrail.com

 **LUMARAIL**TM
ARCHITECTURAL PRODUCTS

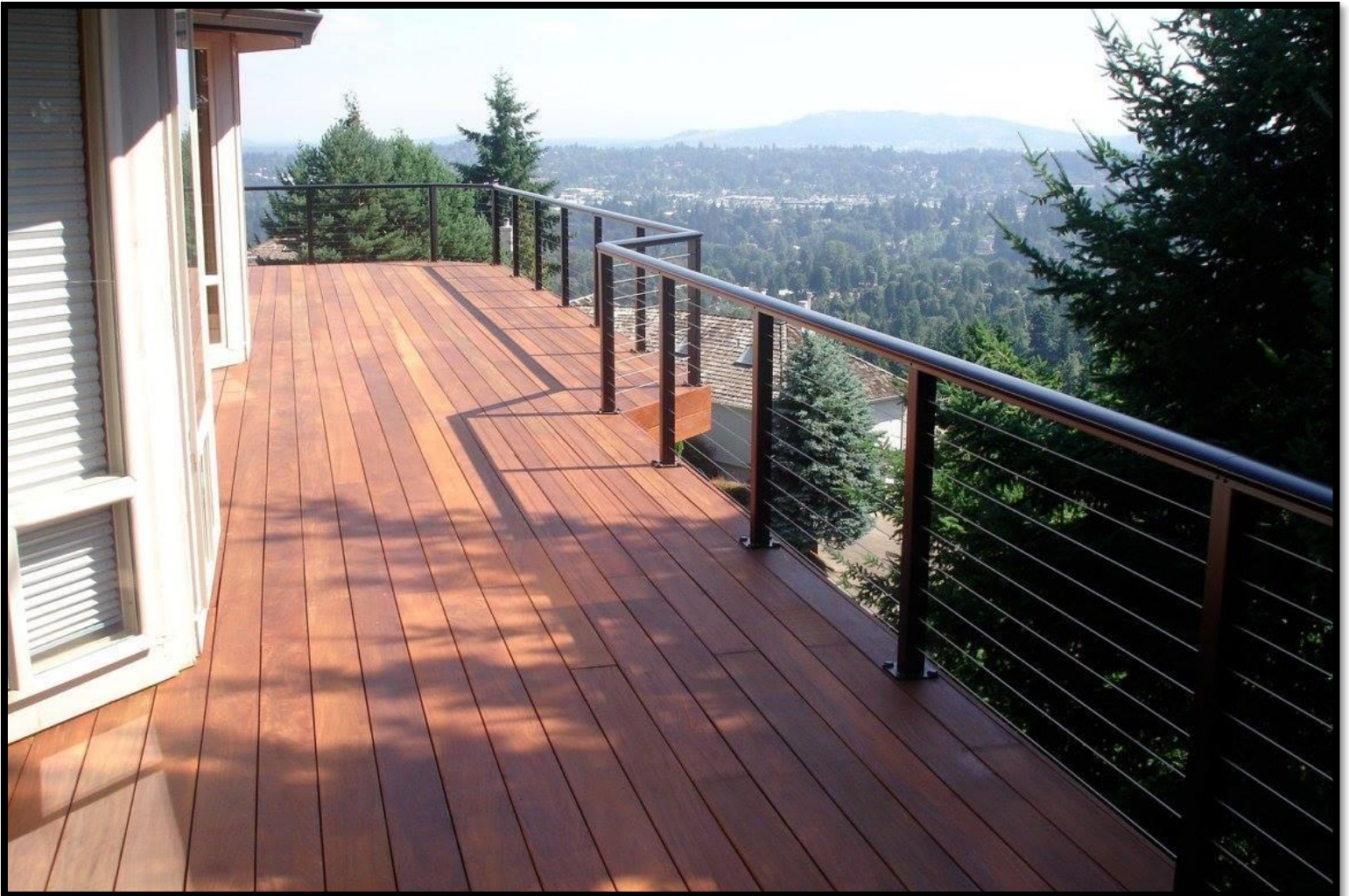
TR200 - Picket



- 3½" Wide Top Rail
- Installs Over Posts
- 5/8" x 5/8" Pickets
- Traditional Design
- Maximum 6' Between Posts



TR999 - Cable



TR999 - Cable



- 3½" Wide Top Rail
- Installs Over Posts
- 1/8" Stainless Steel Cable
- Modern Design
- Maximum 4' Between Posts Unless a Mid-Span Picket Is Used Which Increases The Distance To 6'

precisionrail.com

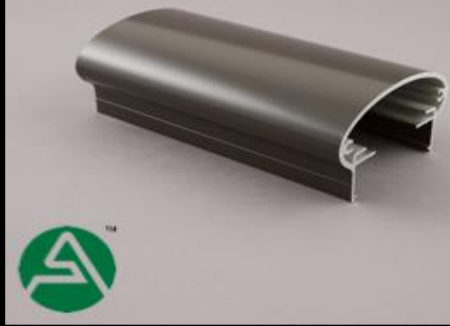
BLACK



ANODIZED



BRONZE



TR999 - Glass



precisionrail.com

 **LUMARAIL**TM
ARCHITECTURAL PRODUCTS

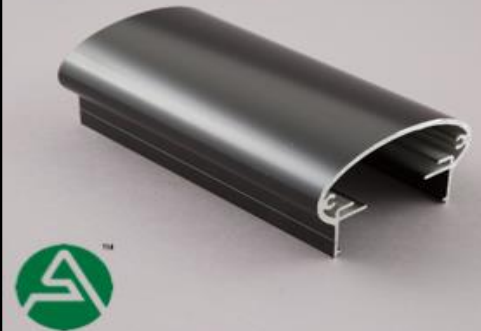
TR999 - Glass



- 3½" Wide Top Rail
- Installs Over Posts
- ¼" Tempered Glass
- Unobstructed View, Wind Break
- Maximum 5' Between Posts

precisionrail.com

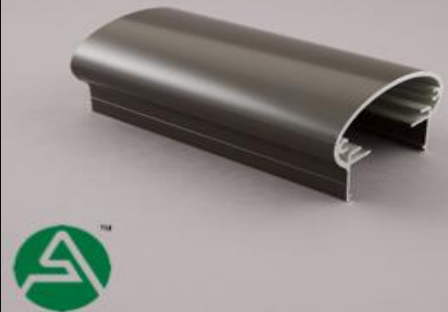
BLACK



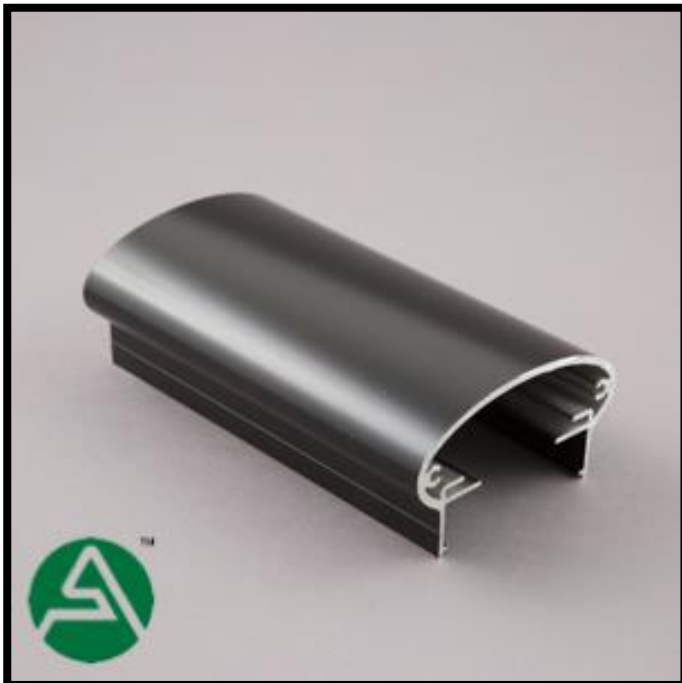
ANODIZED



BRONZE



TR999 - Picket



precisionrail.com

 **LUMARAIL**TM
ARCHITECTURAL PRODUCTS

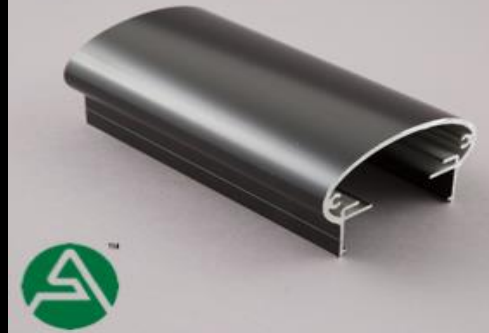
TR999 - Picket



- 3 1/2" Wide Top Rail
- Installs Over Posts
- 5/8" x 5/8" Pickets
- Traditional Design
- Maximum 6' Between Posts

precisionrail.com

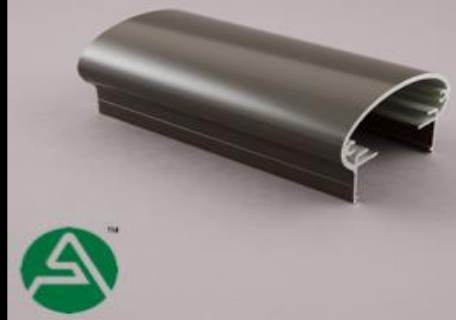
BLACK



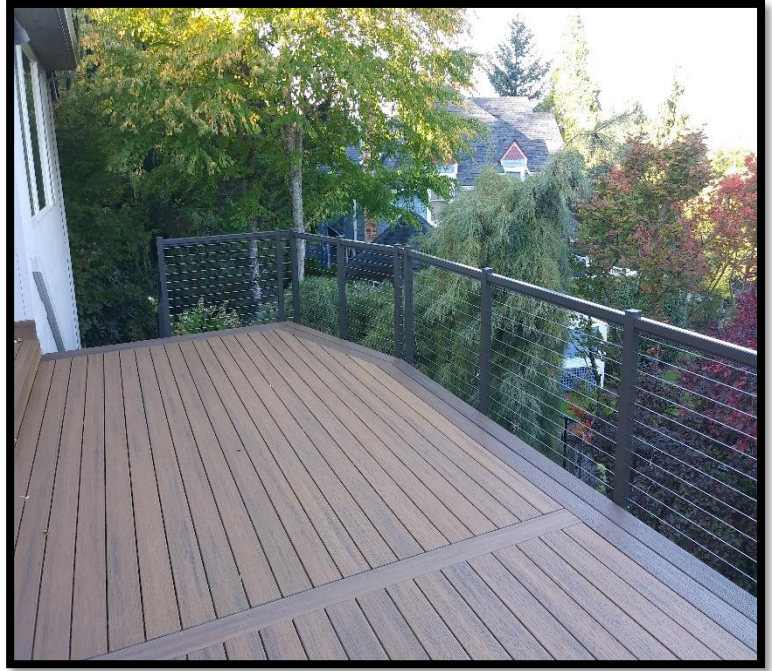
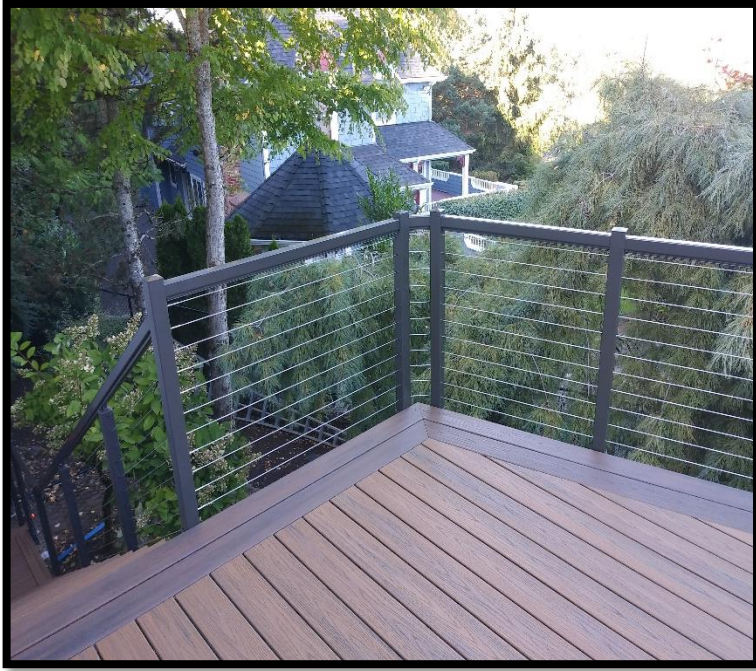
ANODIZED



BRONZE



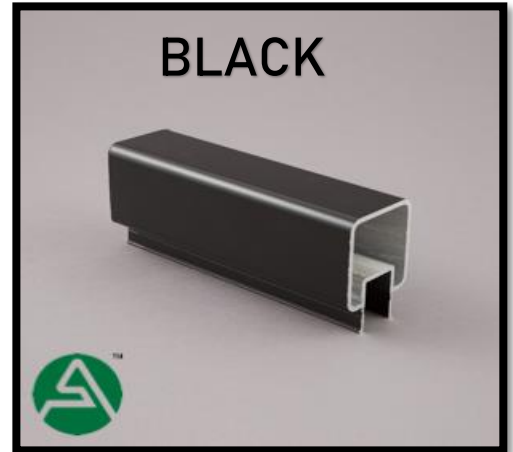
TR375 - Cable



precisionrail.com

 **LUMARAIL**TM
ARCHITECTURAL PRODUCTS

TR375 - Cable



- 1 3/4" Wide Top Rail
- Installs Between Posts
- 1/8" Stainless Steel Cable
- Modern Design
- Maximum 4' Between Posts Unless a Mid-Span Picket Is Used Which Increases The Distance To 6'

precisionrail.com

 **LUMARAIL**TM
ARCHITECTURAL PRODUCTS

TR375 - Glass



precisionrail.com

 **LUMARAIL**TM
ARCHITECTURAL PRODUCTS

TR375 - Glass



WHITE

- 1 3/4" Wide Top Rail
- Installs Between Posts
- 1/4" Tempered Glass
- Unobstructed View, Wind Break
- Maximum 5' Between Posts

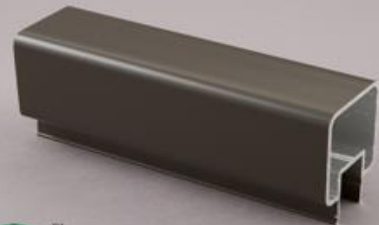
BLACK



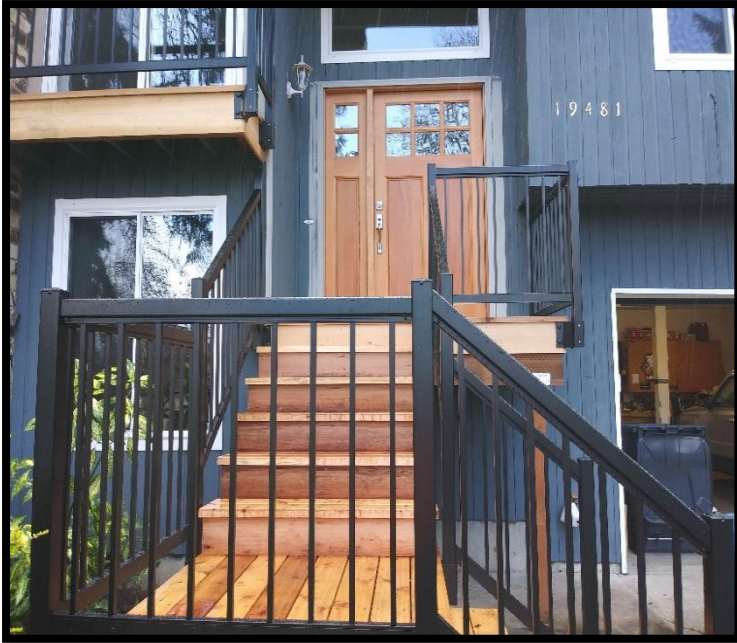
ANODIZED



BRONZE



TR375 - Picket



precisionrail.com

 **LUMARAIL**TM
ARCHITECTURAL PRODUCTS

TR375 - Picket



- 1 3/4" Wide Top Rail
- Installs Between Posts
- 5/8" x 5/8" Pickets
- Traditional Design
- Maximum 6' Between Posts

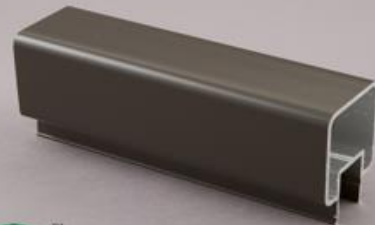
BLACK



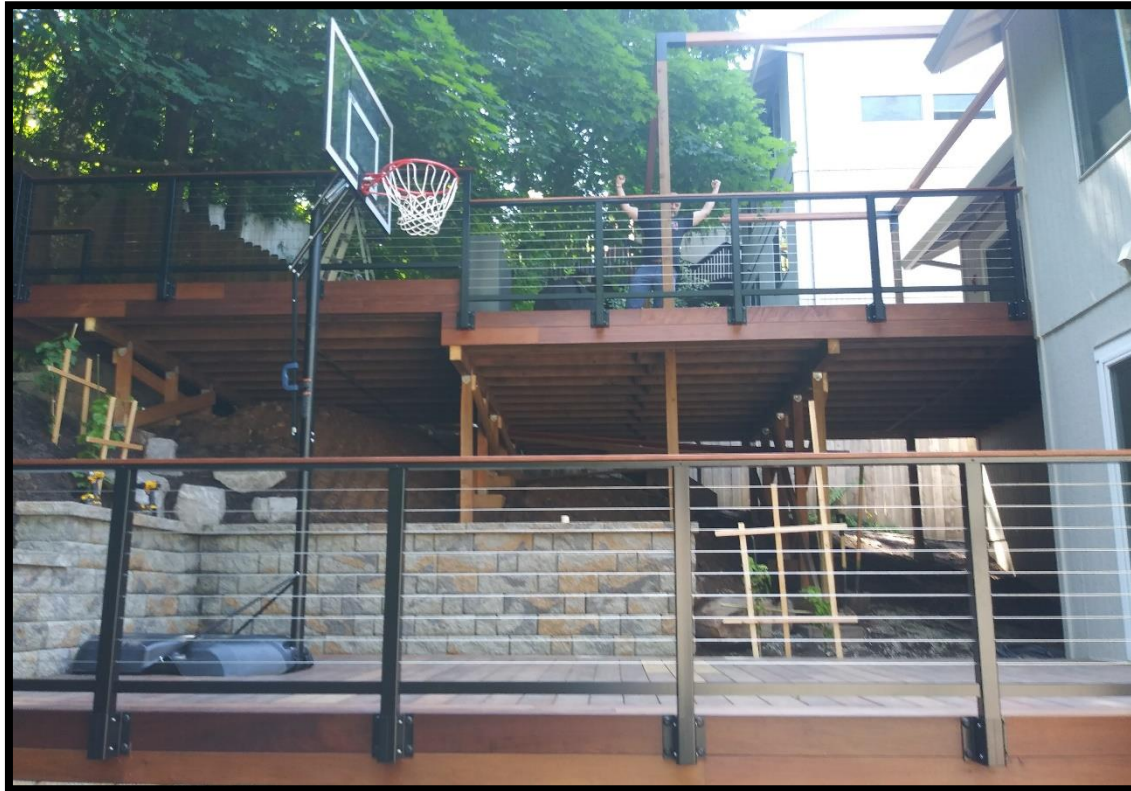
ANODIZED



BRONZE



TR400



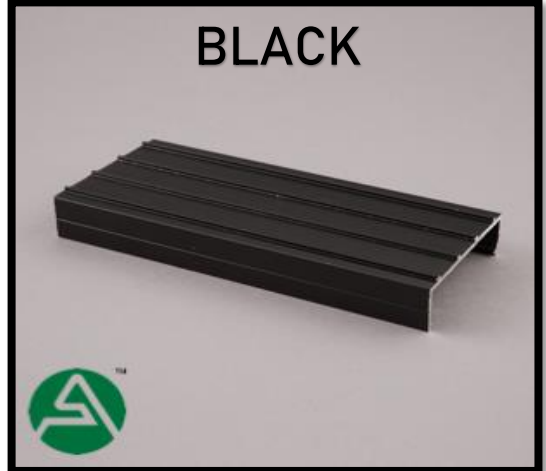
precisionrail.com

 **LUMARAIL**™
ARCHITECTURAL PRODUCTS

TR400



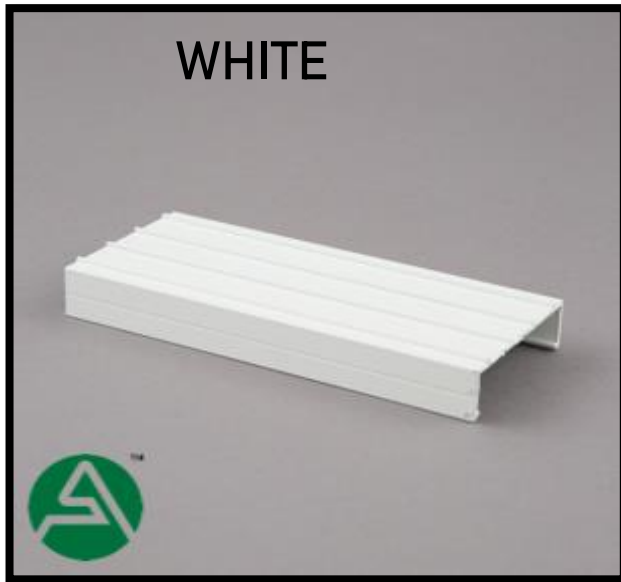
BLACK



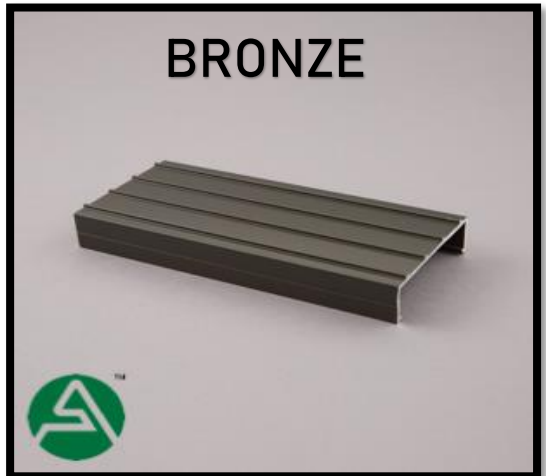
ANODIZED



WHITE



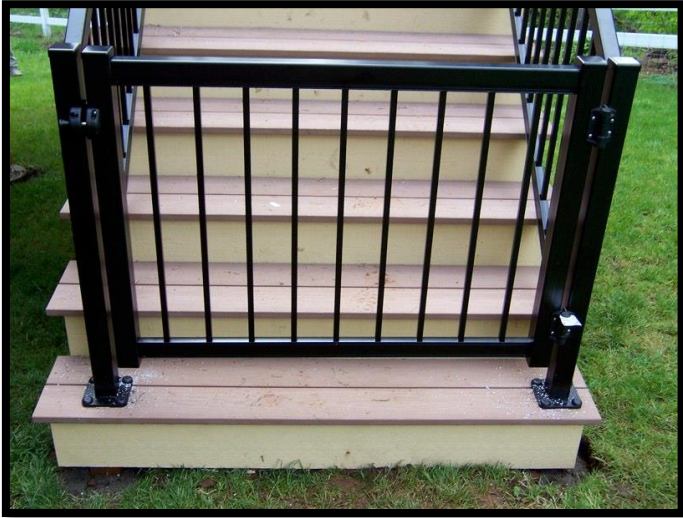
BRONZE



- 3 1/2" Wide Top Rail
- Installs Over Posts
- Cable, Picket or Glass Options
- Modern Design

precisionrail.com

Gates



Gate Width = Actual Dimension minus $1\frac{1}{2}$ "

Gate Height = Actual Dimension minus $\frac{3}{4}$ "

Stainless Steel Components



Cables And All Accessories Are 316 Stainless Steel

- 10 Rows Of Cables For 36" Posts

- 12 Rows Of Cables For 42" Posts

- If Using Bottom Rail Subtract 1 Cable

- Available Lengths - 5', 10', 15', 20', 25', 30', 35', 40', 45', 50', 500', 1,000'

precisionrail.com

 **LUMARAIL**TM
ARCHITECTURAL PRODUCTS

